

# AWML

## ALL-WEATHER MONITOR - LVDS INPUT

The slim-profile, lightweight AWM all-weather monitor is housed in a billet aluminum enclosure with sealed connectors. Multiple mounting options allow for easy integration into confined spaces typically found in rugged industrial and mobile applications.

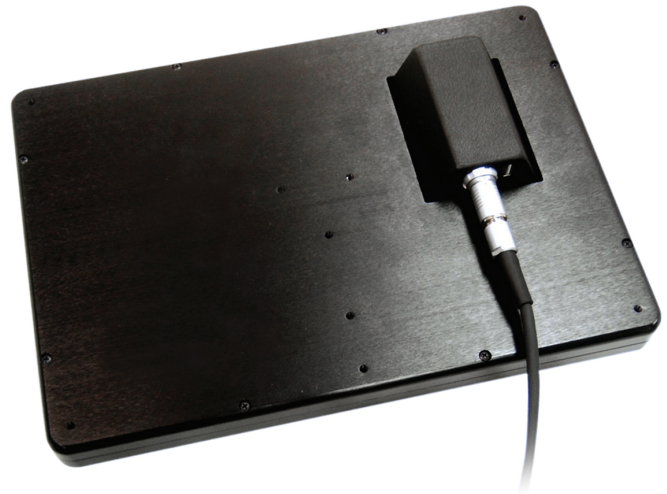
### STANDARD FEATURES

- (1) LVDS Input
- Analog (RS232) Resistive Touch Screen
- SVGA Resolution (800x600)
- IP68 Sealed Connector
- Anti-Reflective and Anti-Glare Treatments
- Enhanced Sunlight Readability
- IP67/NEMA 6 Enclosure
- 8.4", 10.4", 12.1" and 15.0" TFT AM LCD
- 10 ft. Cable Included

### OPTIONAL FEATURES

- USB Pass-through\*
- USB Touch

### STANDARD



\* - IP68 sealed enclosure cancelled with standard USB type-A socket.



**Panel Mount**  
(shown with accessory #900000)



**RAM Mount**



LCD Size	Resolution	Nits	Colors	Viewing Angle	Contrast Ratio	Maximum Power Consumption
8.4” TFT AM LCD	SVGA (800x600)	350 nits	6-bit, 262K	160° (H) x 125° (V)	320:1	12 Watts
10.4" TFT AM LCD	SVGA (800x600)	400 nits	8-bit, 16M	160° (H) x 160° (V)	1000:1	12 Watts
12.1" TFT AM LCD	SVGA (800x600)	350 nits	6-bit, 262K	140° (H) x 100° (V)	600:1	12 Watts
15.0" TFT AM LCD	XGA (1024x768)	500 nits	8-bit, 16M	160° (H) x 105° (V)	350:1	15 Watts
Technical Specifications						
Dimming Ratio	100:1					
Video Inputs	LVDS (Low Voltage Differential Signaling)					
Connectors/Cable*	IP68 Fischer to custom DB-25					
Housing	Milled AL, Black Anodized, UV Clear Coat					
Mounting	Panel or RAM Mount					
Wide Range DC Power Input†	10-36 VDC (12,24,28 VDC nominal)					
Power Conditioning	Protected against Internal Short Circuit, Load Dump, Over Voltage and Reverse Polarity					
Environmental Specifications						
IP Rating‡	IP67 (NEMA 6 Submersible)					
Operating Temperature	0°C to 70°C (32°F to 158°F) - (-40°C with heater option)					
Storage Temperature	-40°C to 80°C (-40°F to 176°F)					
Humidity	0-100%					
Shock	50 G					
Vibration	5.8 G (5-500 Hz)					
Altitude	45,000 ft.					
EMI	Designed to meet FCC B, CE					

\* - Cable lengths longer than 10 ft. not recommended.

† - The power range specified covers momentary environmental fluctuations generally found in a mobile environment while display is operating. For power initialization and continual operation, nominal voltages are required.

‡ - IP68 sealed enclosure cancelled with standard USB type-A socket.

NOTE: CONTINUOUS PRODUCT DEVELOPMENT MAY NECESSITATE SPECIFICATION CHANGES AND DESIGN WITHOUT NOTICE