

HDRM

HIGH DEFINITION RUGGED MONITOR

Offering a ruggedized design, low-power consumption, and high brightness, the ultra-thin HDRM displays up to 1080p HD video during critical operations. The rugged HDRM monitor ensures complete optical performance and full reliability while providing a small footprint for small spaces. Programmable bezel soft keys allow full control of external systems or a custom interface of internal display features (video processing, picture layout, user interface preferences, and navigation shortcuts.) Multiple mounting options allow for seamless integration within any rugged system.

STANDARD FEATURES

- (1) SMPTE In/Out (3G/HD/SD-SDI)
- (SMPTE 424M/292M/259M)
- (1) HDMI Input
- (1) DVI Input
- (3) RS-170 Inputs, PIP Capable
- (1) RS-170 Output
- Up to 1080p60 High Definition Video
- MIL-C Power*
- LED Backlight (1000:1 Dimming Ratio)
- Anti-Reflective and Anti-Glare Treatments
- Enhanced Sunlight Readability
- IP67/NEMA 6 Enclosure
- (15) User Programmable Buttons (RS-232)
- 9.0", 12.1", 14.1" and 17.5" TFT AM LCD
- MIL-STD-461, 704, 810, 1275 Compliant

OPTIONAL FEATURES

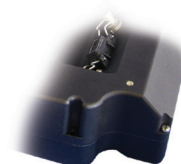
- Analog Resistive Touch Screen (USB or RS-232)
- NVIS MIL-STD-3009 Class B White Compliant
- Night Vision Compatible – Monochrome Red/Green



* Cables not included

MOUNT OPTIONS

(Accessories quoted individually)



Panel Mount



RAM Mount



Side Mount

(AVAILABLE IN 12.1" - 17".5 SIZES)



VESA Mount



LCD Size		Resolution	Nits	Viewing Angle	Contrast Ratio
9.0" TFT AM LCD		WXGA (1280x768)	800 nits	170° (H) x 170° (V)	1000:1
12.1" TFT AM LCD		WXGA (1280x800)	700 nits	160° (H) x 140° (V)	700:1
14.1" TFT AM LCD		WXGA (1280x800)	800 nits	160° (H) x 140° (V)	700:1
17.5" TFT AM LCD		WXGA (1280x768)	700 nits	160° (H) x 140° (V)	700:1
Technical Specifications					
Display		8-bit color, 16,777,216 colors			
Dimming Ratio		1000:1			
Video Inputs		(1) HDMI, (1) SMPTE 3G/HD/SD-SDI, (1) DVI, (3) RS-170			
Video Outputs		(1) SMPTE 3G/HD/SD-SDI, (1) RS-170			
Housing		Milled AL, Black Hard Anodized			
Mount Options		(Quoted individually.) Panel, RAM, 75mm VESA Mount, Side Mount (12.1" - 17.5" sizes)			
Wide Range DC Power Input†		10-36 VDC (12, 24, 28 VDC nominal)			
Power Conditioning		Protected against Internal Short Circuit, Load Dump, Over Voltage and Reverse Polarity			
Environmental Specifications					
IP Rating		IP67 (NEMA 6 Submersible)			
Operating Temperature		-46°C to 71°C (-51°F to 160°F); -20°C (-4°F) with Touch Option			
Storage Temperature		-54°C to 71°C (-65°F to 160°F)			
Humidity		0-100%			
Altitude		45,000 ft.			
Military Specifications					
MIL-STD-461	EMI		MIL-STD-810	Method 512; Immersion	
MIL-STD-704	Aircraft Power Requirements		MIL-STD-810	Method 513; Acceleration	
MIL-STD-810	Method 500, Altitude		MIL-STD-810	Method 514; Procedure I, II, V, VI; General Vibration	
MIL-STD-810	Method 501; I & II; High Temperature		MIL-STD-810	Method 516; Procedure I, Functional Shock	
MIL-STD-810	Method 502; I & II; Low Temperature		MIL-STD-810	Method 520; Temp, Humidity, Vibe and Altitude	
MIL-STD-810	Method 503; Temperature Shock		MIL-STD-1275	Vehicle Power Requirements	
MIL-STD-810	Method 505; Solar Radiation		MIL-STD-1472	Thermal Contact Hazard	
MIL-STD-810	Method 506; Rain		MIL-STD-3009	NVIS Compatible (Optional)	
MIL-STD-810	Method 507; Humidity		MIL-PRF-22885	Sunlight Readability for Push Buttons	
MIL-STD-810	Method 508; Fungus		MIL-A-8625	Standard Finish, Type III, Class 1 & 2	
MIL-STD-810	Method 509; Salt/Fog		MIL-PRF-22750	Painted Finish, Optional, Minimum Quantity Required	
MIL-STD-810	Method 510; Blowing Sand and Dust		MIL-DTL-26482	Connector, Qualified	
MIL-STD-810	Method 511; Explosive Atmosphere		MIL-DTL-38999	Connector, Qualified	

* Cables not included

† Power range specified covers momentary environmental fluctuations generally found in a mobile environment while display is operating. For power initialization and continual operation, nominal voltages are required

ON-GOING PRODUCT DEVELOPMENT MAY NECESSITATE DESIGN AND SPECIFICATION CHANGES WITHOUT NOTICE.